



**Anytown Public Schools  
New England**

**School Year 2024-25 Enrollment Projection Report**

*Copyright, New England School Development Council, 2024*

# Table of Contents

Section	Page
Enrollment Summary.....	1
Historical Enrollment Table.....	2
Historical Enrollment Graph.....	3
Projected Enrollment Table.....	4
Projected Enrollment Graph.....	5
Historical & Projected Enrollment Graph.....	6
Historical & Projected Enrollment in Grade Combinations Line Graph.....	7
Historical & Projected Enrollment in Grade Combinations Stacked Column Graph.....	8
Birth to Kindergarten Relationship Graph.....	9
Additional Information .....	10
New England's PK-12 Enrollment Trends.....	11
Projection Methodology and Reliability .....	12

# Enrollment Summary

NESDEC is pleased to send you this report displaying the past, present, and projected enrollments for your District. It is important to update enrollment projections every year to identify changes in enrollment patterns. Ten-year projections are designed to provide your District with yearly, up-to-date enrollment information that can be used by boards and administrators for effective planning and allocation of resources. We received the enrollment data from the District, and we assume that the method of collecting this data has been consistent from year to year.

Birth data informs Kindergarten enrollment. Each fall, NESDEC secures birth data from State sources, providing a snapshot in time as to actual and provisional births as reported by the State, and then uses this birth data to predict Kindergarten enrollments. We only use Fall birth data to assure consistency in reporting from year to year. Estimated births, which are an average of the previous five years of birth data, are based on this same snapshot. NESDEC acknowledges the variability of the provisional and the estimated birth data, and notes that the projected Kindergarten enrollments may serve as a guide to future planning.

Enrollment projections are more reliable in Years #1-3 in the future. Projections four to ten years out may serve as a guide to future enrollments and are useful for planning purposes. In light of this, NESDEC has added a “Spring Update Refresher” enrollment projection at no cost to affiliates. For more information, please refer to the Projection Methodology and Reliability section of this document.

A detailed summary of the Enrollment Projection will be written here.

# Historical Enrollment

School District: **Anytown Public Schools, New England**

10/1/2024

Historical Enrollment By Grade																			
Birth Year	Births*	School Year	PK	K	1	2	3	4	5	6	7	8	9	10	11	12	UNGR	K-12	PK-12
2009	112	2014-15	19	145	201	247	234	252	244	237	245	219	220	205	194	195	0	2838	2857
2010	124	2015-16	39	131	185	215	251	237	253	247	238	249	227	227	197	200	0	2857	2896
2011	126	2016-17	59	150	177	193	226	250	244	257	260	243	254	227	221	204	0	2906	2965
2012	107	2017-18	62	141	186	190	198	235	251	250	265	260	234	246	214	224	0	2894	2956
2013	106	2018-19	61	133	196	192	201	201	247	260	258	266	255	225	243	222	< 10 **	2900	2961
2014	142	2019-20	65	181	182	205	194	211	201	252	264	261	272	243	226	246	< 10 **	2939	3004
2015	125	2020-21	44	185	194	194	203	191	212	203	248	261	266	269	254	231	0	2911	2955
2016	122	2021-22	57	193	222	204	202	215	203	221	200	252	269	269	266	251	< 10 **	2970	3027
2017	124	2022-23	63	191	207	231	206	204	218	201	227	211	251	261	273	271	< 10 **	2953	3016
2018	125	2023-24	62	207	198	225	230	215	205	220	192	231	208	245	258	267	0	2901	2963
2019	135	2024-25	61	212	228	208	226	238	218	210	221	195	230	210	246	258	0	2900	2961

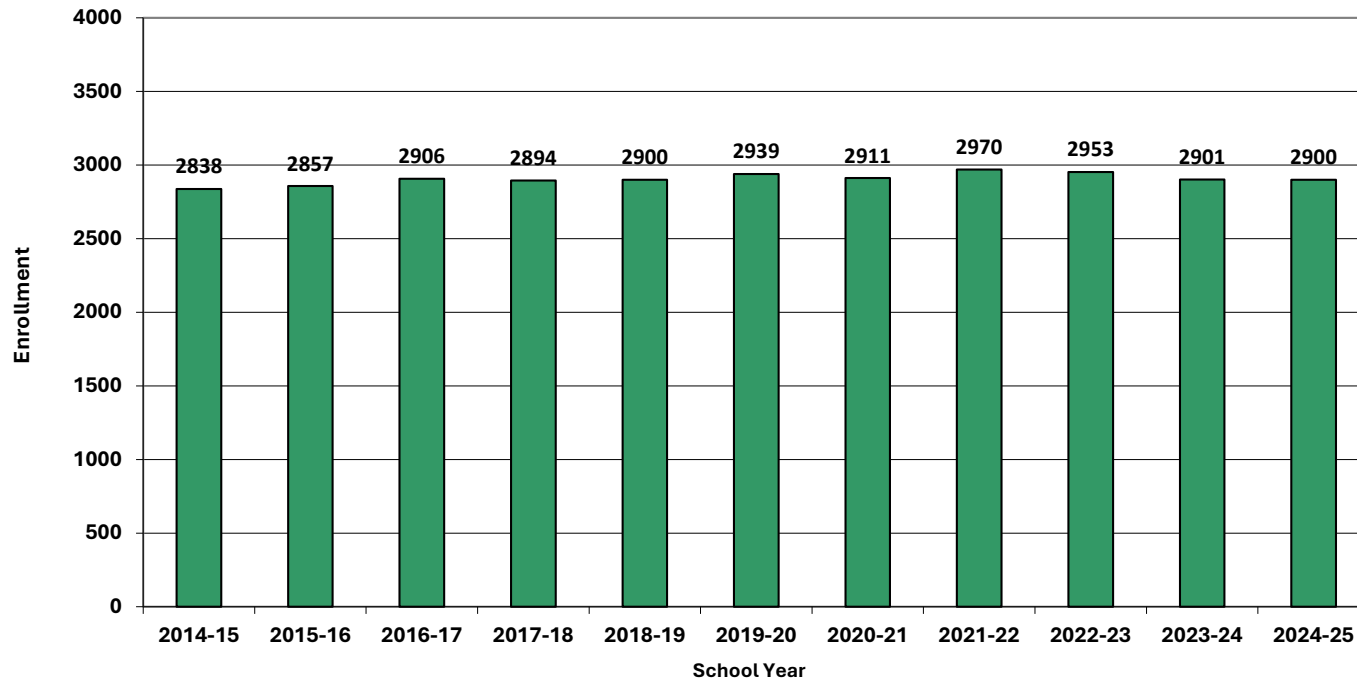
\*Birth data provided by Public Health Vital Records Departments in each state.

\*\* < 10 Not reported, to protect subgroups with fewer than 10 students.

Historical Enrollment in Grade Combinations									
School Year	PK-4	K-4	5-6	7-8	K-8	PK-8	5-8	7-12	9-12
2014-15	1098	1079	481	464	2024	2043	945	1278	814
2015-16	1058	1019	500	487	2006	2045	987	1338	851
2016-17	1055	996	501	503	2000	2059	1004	1409	906
2017-18	1012	950	501	525	1976	2038	1026	1443	918
2018-19	984	923	507	524	1954	2015	1031	1469	945
2019-20	1038	973	453	525	1951	2016	978	1512	987
2020-21	1011	967	415	509	1891	1935	924	1529	1020
2021-22	1093	1036	424	452	1912	1969	876	1507	1055
2022-23	1102	1039	419	438	1896	1959	857	1494	1056
2023-24	1137	1075	425	423	1923	1985	848	1401	978
2024-25	1173	1112	428	416	1956	2017	844	1360	944

Historical Percentage Changes			
School Year	K-12	Diff.	%
2014-15	2838		
2015-16	2857	19	0.7%
2016-17	2906	49	1.7%
2017-18	2894	-12	-0.4%
2018-19	2900	6	0.2%
2019-20	2939	39	1.3%
2020-21	2911	-28	-1.0%
2021-22	2970	59	2.0%
2022-23	2953	-17	-0.6%
2023-24	2901	-52	-1.8%
2024-25	2900	-1	0.0%
<b>Change</b>		<b>62</b>	<b>2.2%</b>

# Grades K-12 Historical Enrollment



# Projected Enrollment

School District: Anytown Public Schools, New England

10/1/2024

Enrollment Projections By Grade*																				
Birth Year	Births*		School Year	PK	K	1	2	3	4	5	6	7	8	9	10	11	12	UNGR	K-12	PK-12
2019	135		2024-25	61	212	228	208	226	238	218	210	221	195	230	210	246	258	0	2900	2961
2020	120		2025-26	0	191	227	242	209	233	241	220	209	228	194	228	211	246	0	2879	2879
2021	135		2026-27	0	214	204	240	243	215	236	243	219	215	226	192	229	211	0	2887	2887
2022	83		2027-28	0	132	229	216	241	250	217	238	242	225	213	224	192	229	0	2848	2848
2023	80	(prov.)	2028-29	0	127	141	243	217	248	253	219	237	249	223	211	225	192	0	2785	2785
2024	111	(est.)	2029-30	0	176	136	149	244	224	251	255	218	244	247	221	212	225	0	2802	2802
2025	106	(est.)	2030-31	0	168	188	144	149	251	226	253	254	224	242	245	222	212	0	2778	2778
2026	103	(est.)	2031-32	0	163	180	199	144	153	254	228	252	261	222	240	246	222	0	2764	2764
2027	96	(est.)	2032-33	0	153	174	191	200	148	155	256	227	259	259	220	241	246	0	2729	2729
2028	99	(est.)	2033-34	0	157	164	184	192	206	150	156	255	234	257	257	221	241	0	2674	2674
2029	103	(est.)	2034-35	0	164	168	174	185	198	208	151	155	263	232	255	221	241	0	2632	2632

Note: Ungraded students (UNGR) often are high school students whose anticipated years of graduation are unknown, or students with special needs - UNGR not included in Grade Combinations for 7-12, 9-12, etc.

  Based on an estimate of births

  Based on children already born

  Based on students already enrolled

\*Birth data provided by Public Health Vital Records Departments in each state.

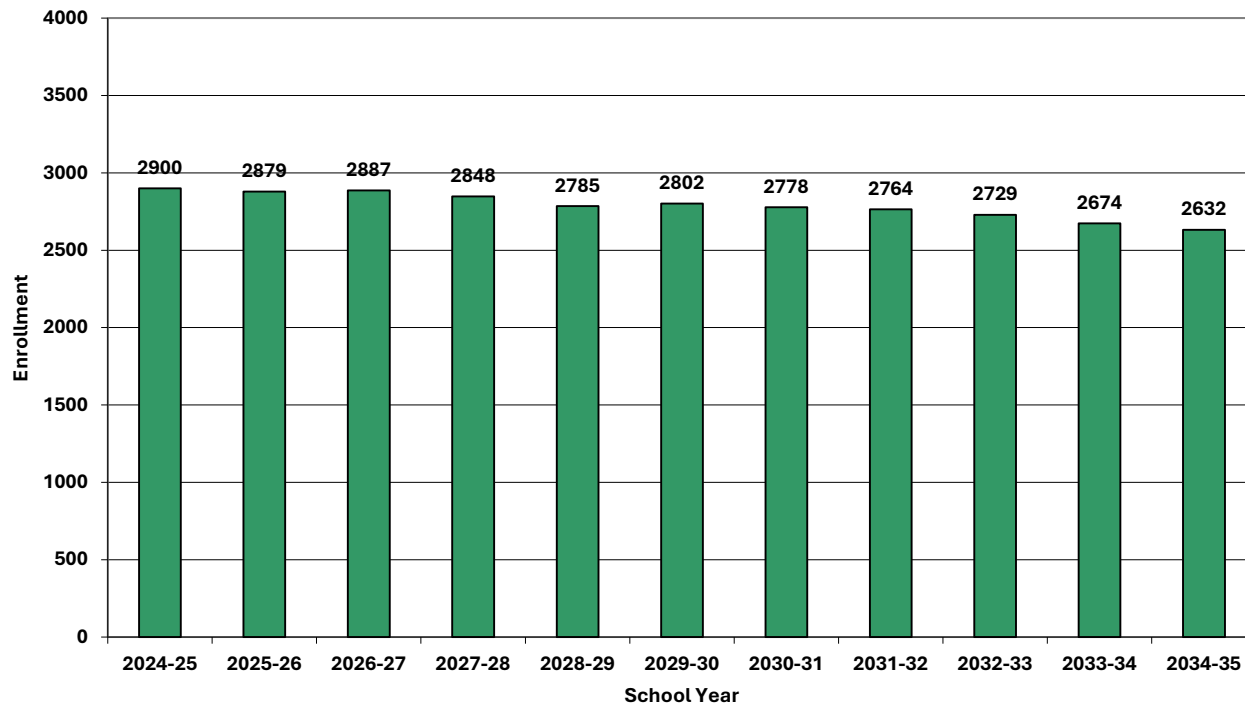
\*\* < 10 Not reported, to protect subgroups with fewer than 10 students.

Projected Enrollment in Grade Combinations*									
School Year	PK-4	K-4	5-6	7-8	K-8	PK-8	5-8	7-12	9-12
2024-25	1173	1112	428	416	1956	2017	844	1360	944
2025-26	1102	1102	461	437	2000	2000	898	1316	879
2026-27	1116	1116	479	434	2029	2029	913	1292	858
2027-28	1068	1068	455	467	1990	1990	922	1325	858
2028-29	976	976	472	486	1934	1934	958	1337	851
2029-30	929	929	506	462	1897	1897	968	1367	905
2030-31	900	900	479	478	1857	1857	957	1399	921
2031-32	839	839	482	513	1834	1834	995	1443	930
2032-33	866	866	411	486	1763	1763	897	1452	966
2033-34	903	903	306	489	1698	1698	795	1465	976
2034-35	889	889	359	418	1666	1666	777	1384	966

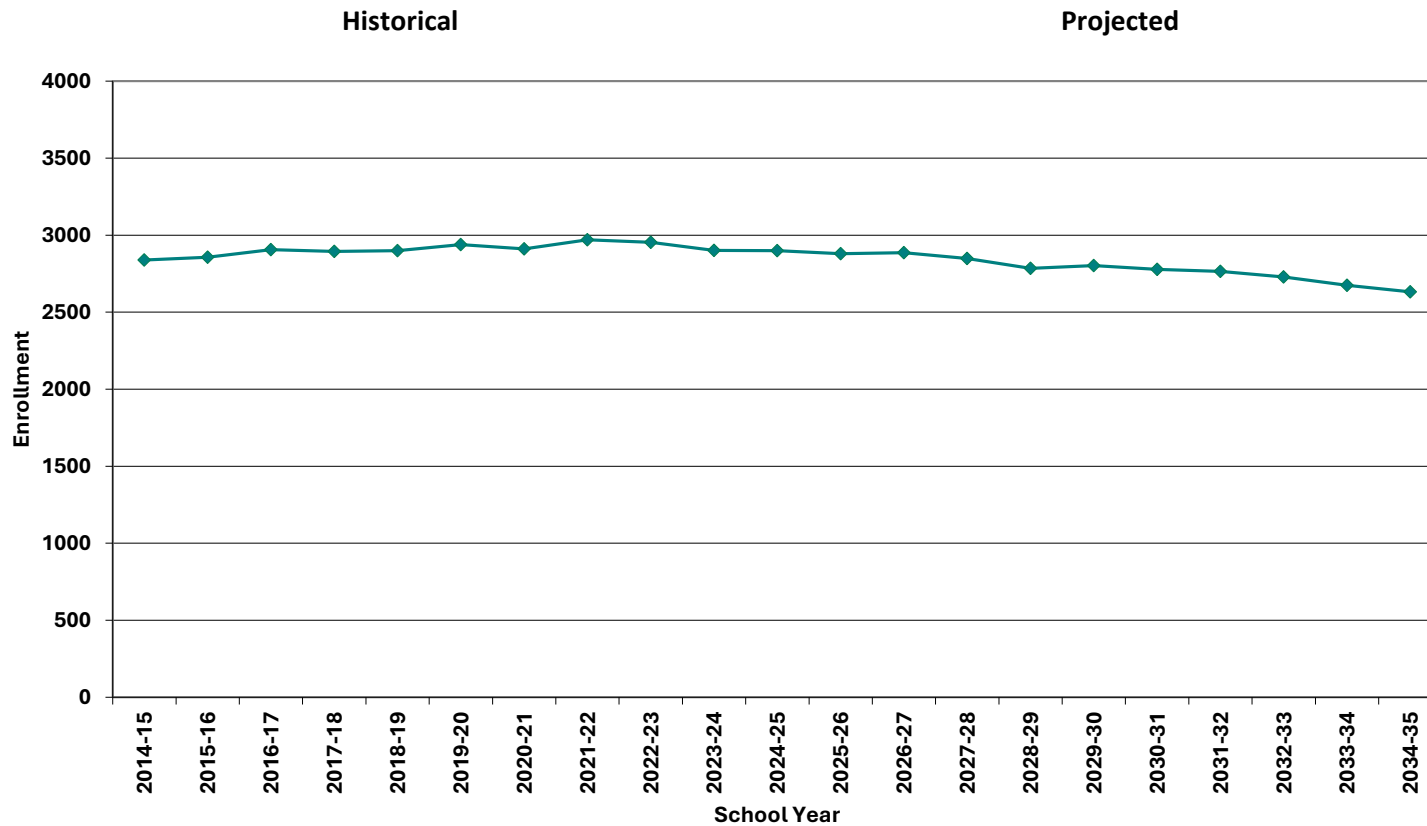
Projected Percentage Changes			
School Year	K-12	Diff.	%
2024-25	2900		
2025-26	2879	-21	-0.7%
2026-27	2887	8	0.3%
2027-28	2848	-39	-1.4%
2028-29	2785	-63	-2.2%
2029-30	2802	17	0.6%
2030-31	2778	-24	-0.9%
2031-32	2764	-14	-0.5%
2032-33	2729	-35	-1.3%
2033-34	2674	-55	-2.0%
2034-35	2632	-42	-1.6%
<b>Change</b>		<b>-268</b>	<b>-9.2%</b>

\*Projections should be updated annually to reflect changes in in/out-migration of families, real estate sales, residential construction, births, and similar factors.

# Grades K-12 Projected Enrollment



# Grades K-12 Historical & Projected Enrollment

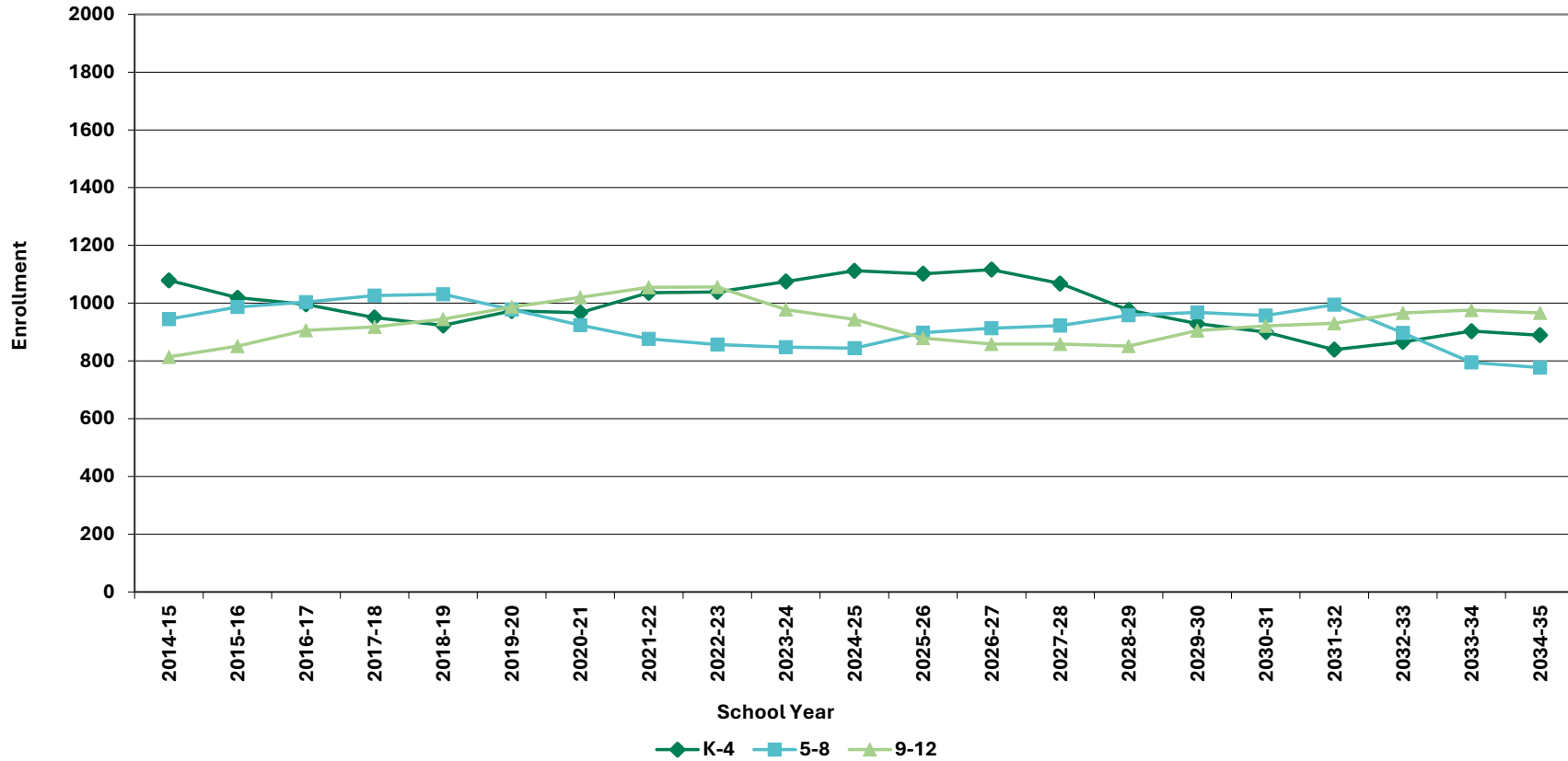




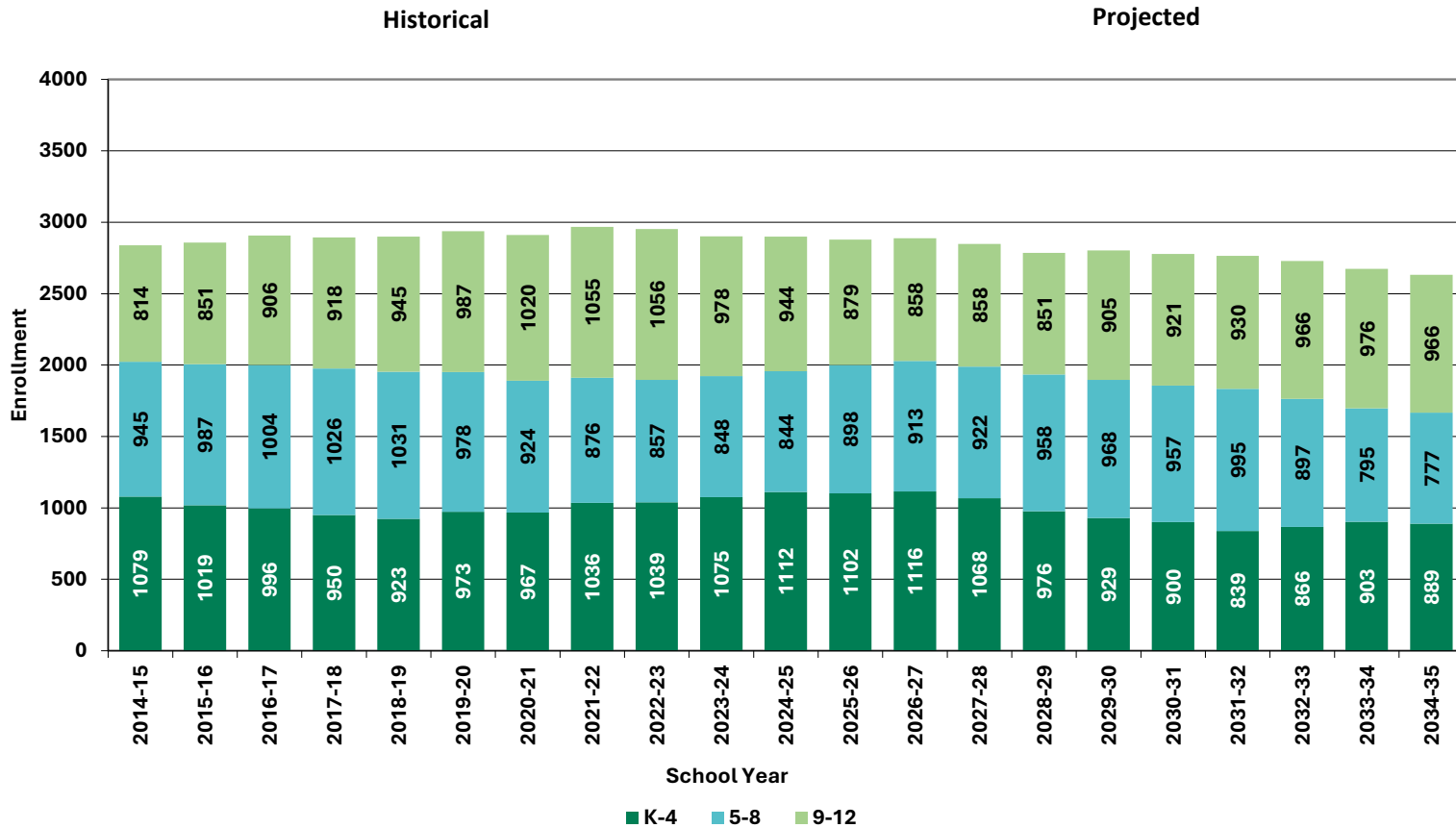
# Historical & Projected Enrollments in Grade Combinations

Historical

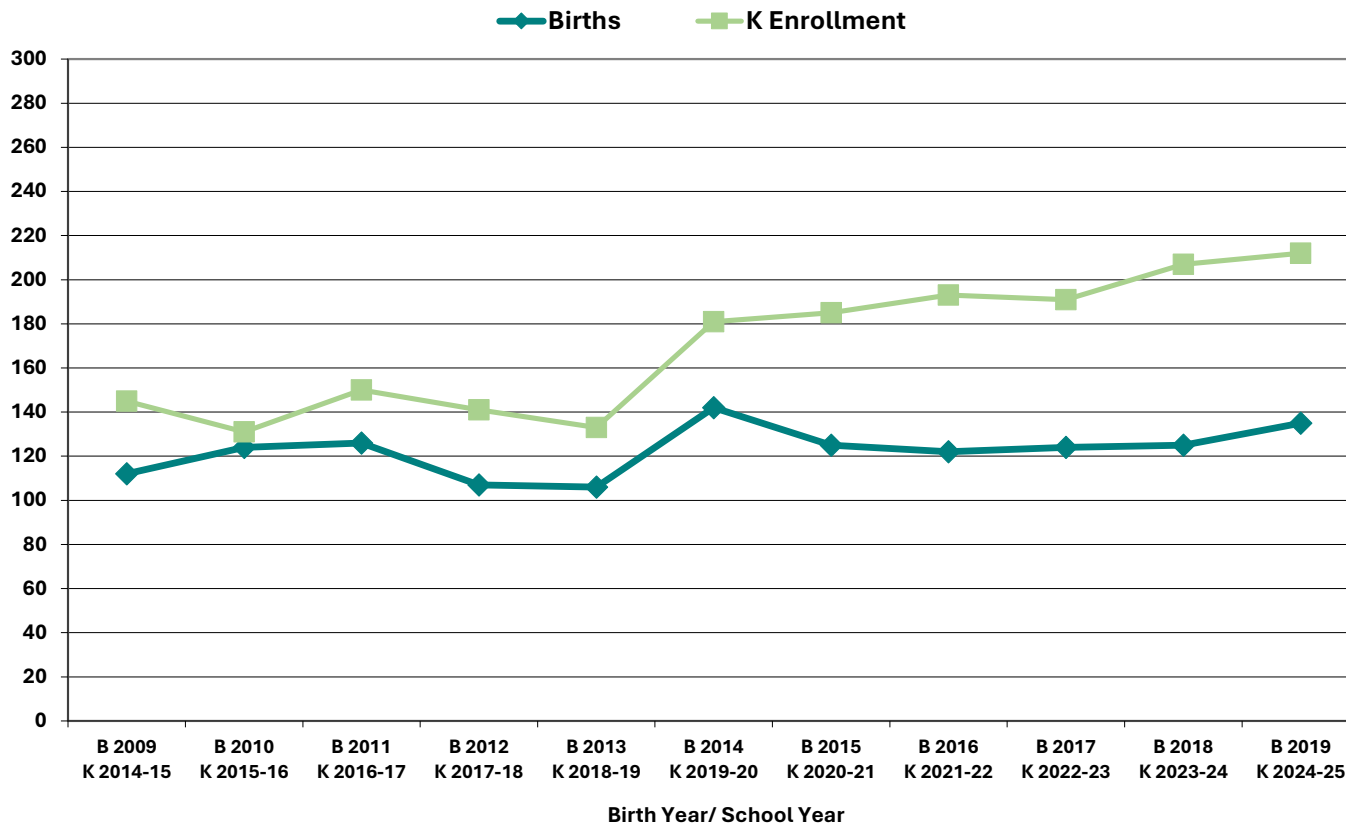
Projected



# Historical & Projected Enrollments in Grade Combinations



# Birth-to-Kindergarten Relationship



## Additional Information

School Year	9-12 CTE	K-12 Non-Public	K-12 Choice-In	K-12 Choice-Out	K-12 Out District SPED	K-12 Homeschool
2020-21	25	36	10	73	25	35
2021-22	30	30	12	156	15	25
2022-23	28	32	14	65	15	15
2023-24	26	28	15	78	18	20
2024-25	24	24	12	75	15	18

\* Data provided by District.

"n/a" signifies that information was not provided by District.

\*\* < 10 Not reported, to protect subgroups with fewer than 10 students.

Building Permits Issued		
Year	Single-Family	Multi-Units
2020	38	0
2021	40	0
2022	32	8
2023	28	6
2024	18 to date	4 to date

\*Building permit data from HUD.

# New England's PK-12 Enrollments Trends

From 2022 to 2031, the US Department of Education anticipates changes in PK-12 enrollment of -1.8% in the South, -9.7% in the West, -5.0% in the Midwest, -9.1% in the Northeast, and a total of -5.5% nationwide.

State	Fall 2022 PK - 12	Fall 2031 Projected	PK-12 Decline	% Change 2022-2031
USA	49,618,464	46,889,600	-2,728,864	-5.5%
CT	513,513	465,200	-48,313	-9.4%
ME	173,853	162,900	-10,953	-6.3%
MA	923,349	857,100	-66,249	-7.2%
NH	168,909	156,600	-12,309	-7.3%
RI	137,449	127,900	-9,549	-6.9%
VT	83,654	77,300	-6,354	-7.6%

**Source:** U.S. Department of Education, National Center for Education Statistics, Enrollment in public elementary and secondary schools, by region, state, and jurisdiction: Selected years, fall 1990 through fall 2031, Table 203.20, Report Generated Dec. 2023, NESDEC 2.8.24

Although most New England Districts are seeing a decline in the number of births, NESDEC's experience indicates that the impact on enrollment varies from District to District. Almost half of New England Districts have been growing in PK-12 enrollment, and a similar number are declining (often in rural areas), with the other Districts remaining stable.

# Projection Methodology and Reliability

## **PROJECTION METHODOLOGY**

Cohort component (survival) technique is a frequently used method of preparing enrollment forecasts. NESDEC uses this method, but modifies it in order to move away from forecasts that are wholly computer- or formula-driven. Such modification permits the incorporation of important, current district-specific demographic information into the generation of enrollment forecasts (such as in/out-migration of students, resident births, HUD-reported building permits, etc.). Percentages are calculated from the historical enrollment data to determine a reliable percentage of increase or decrease in enrollment between any two grades. For example, if 100 students enrolled in Grade 1 in 2023-24 increased to 104 students in Grade 2 in 2024-25, the percentage of survival would be 104%, or a ratio of 1.04. Ratios are calculated between each pair of grades or years in school over several recent years.

After study and analysis of the historical ratios, and based upon a reasonable set of assumptions regarding births, migration rates, retention rates, etc., ratios most indicative of future growth patterns are determined for each pair of grades. The ratios thus selected are applied to the present enrollment statistics to project into future years. The ratios are the key factors in the reliability of the projections, assuming validity of the data at the starting point.

## **RELIABILITY OF ENROLLMENT PROJECTIONS**

Projections can serve as useful guides to school administrators for educational planning. Enrollment projections are more reliable in Years #1-3 in the future and less reliable in the “out-years.” Projections four to ten years out may serve as a guide to future enrollments and are useful for planning purposes, but they should be viewed as subject to change given the likelihood of potential shifts in underlying assumptions/trends, such as student migration, births as they relate to Kindergarten enrollment, and other factors.

Projections that are based upon **the children who already are in the district** (the current K-12 population only) will be the most reliable. The second level of reliability will be for those children already **born into the community but not yet old enough to be in school**. The least reliable category is the group for which an estimate must be made **to predict the number of births**, thereby adding additional uncertainty. See these three multi-colored groupings on the “Projected Enrollment” tab.

Annual updates allow for early identification of recent changes in historical trends. When the actual enrollment in a grade is significantly different (higher or lower) from the projected number, it is important (yet difficult) to determine whether this is a one-year aberration or whether a new trend may have begun. **In light of this possibility, NESDEC urges all school districts to have updated enrollment forecasts developed by NESDEC each October.** This service is available at no cost to affiliated school districts.